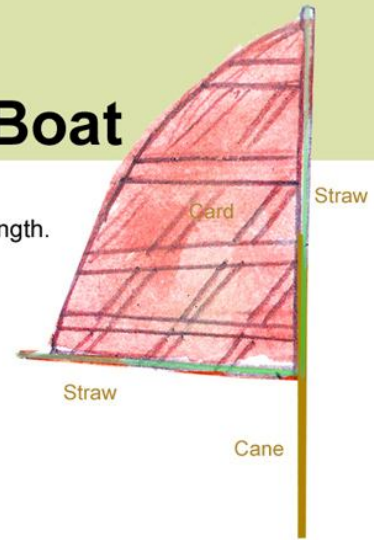


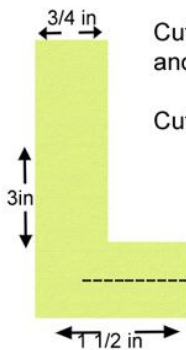
Build a Sail Boat

Sail

Make a sail from another piece of card sheet. with a base of 8" in length.
Attach the straw along side of the sail.
Another straw along the height.
Slip the straw on to the mast and glue them together



Rudder

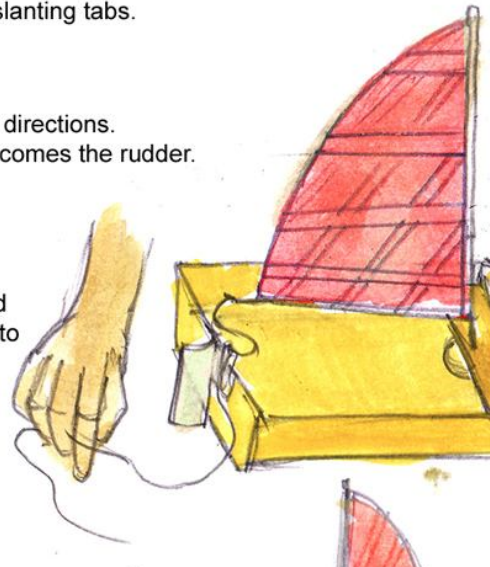


Cut an L shaped (3" long and 1 1/2" wide at the base and 3/4" on the top from a thick plastic sheet.

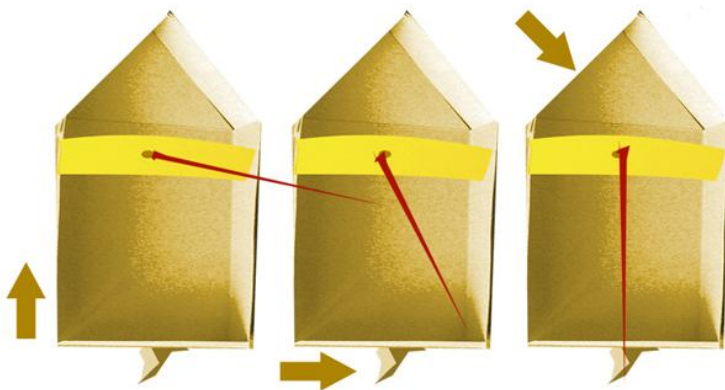
Cut the base of the L in half so that there are two slanting tabs.

Fold back the two tabs each in the opposite directions.
Staple them to the back of the boat. This becomes the rudder.

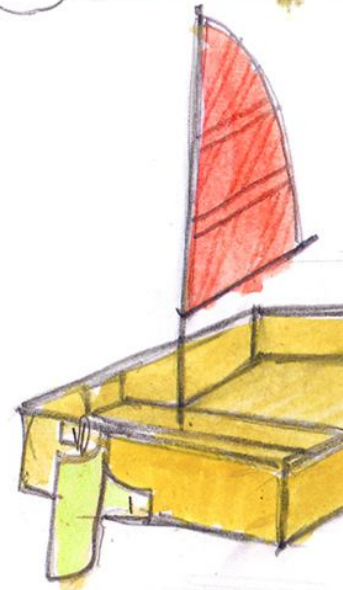
Cut a piece of string about 8" long. stick one end behind the cane and take it through the straw and bring the other end through a paper clip attached to the back of the boat



Test your boat, set the sails in these direction.
Alter the position with the string attached to the cane



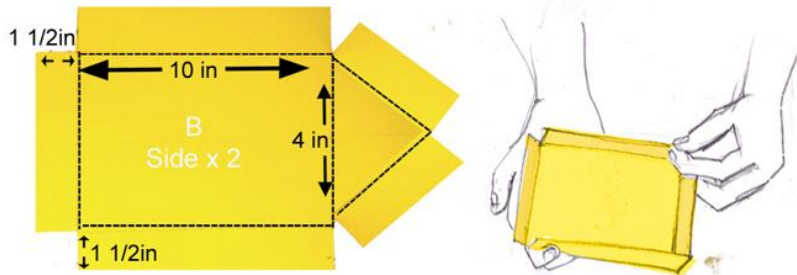
See the arrows indicates the wind direction.
try blowing from other directions and see what happens.



Build a Sail Boat

Template

Cut your hull shape from thick card using the templates guide.
Score along the dotted lines with scissors.
Use tape to fasten the sides together

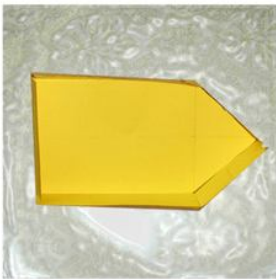


You will need

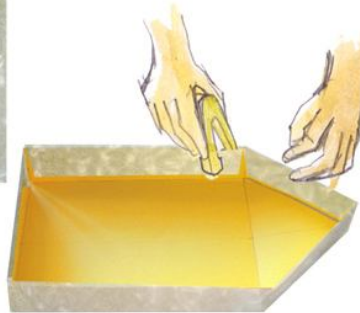
- Pencil
- Ruler
- Thick card
- Plastic sheet
- Stapler
- Bradawl
- Non hardening modeling clay
- Thin Garden canes
- Coloured paper
- plastic straw
- Thick Plastic sheet
- Paper clip
- Sheet of papaer
- String



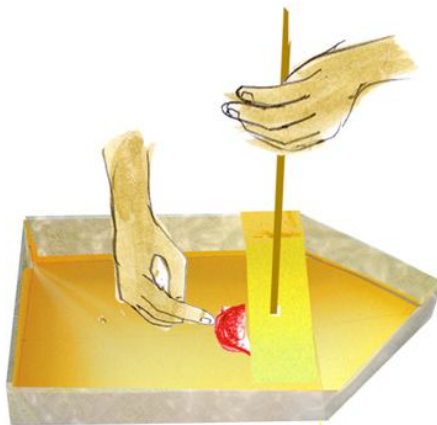
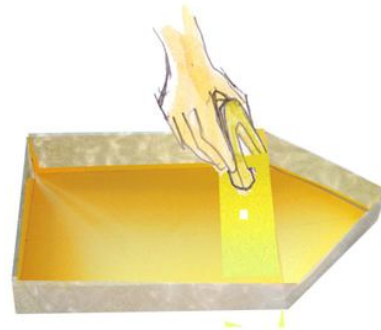
Take a piece of plastic sheet. Keep the boat on the sheet. Cover the sides of the boat.



Fold the plastic in and staple it along the edges.



Take a strip of card a little wider than the boat.
Make a samll hole.
Then staple it in place as shown.



Put a small ball of modelling clay under the strip and push a cane through the hole into the clay.